

Laser protection for optical tables

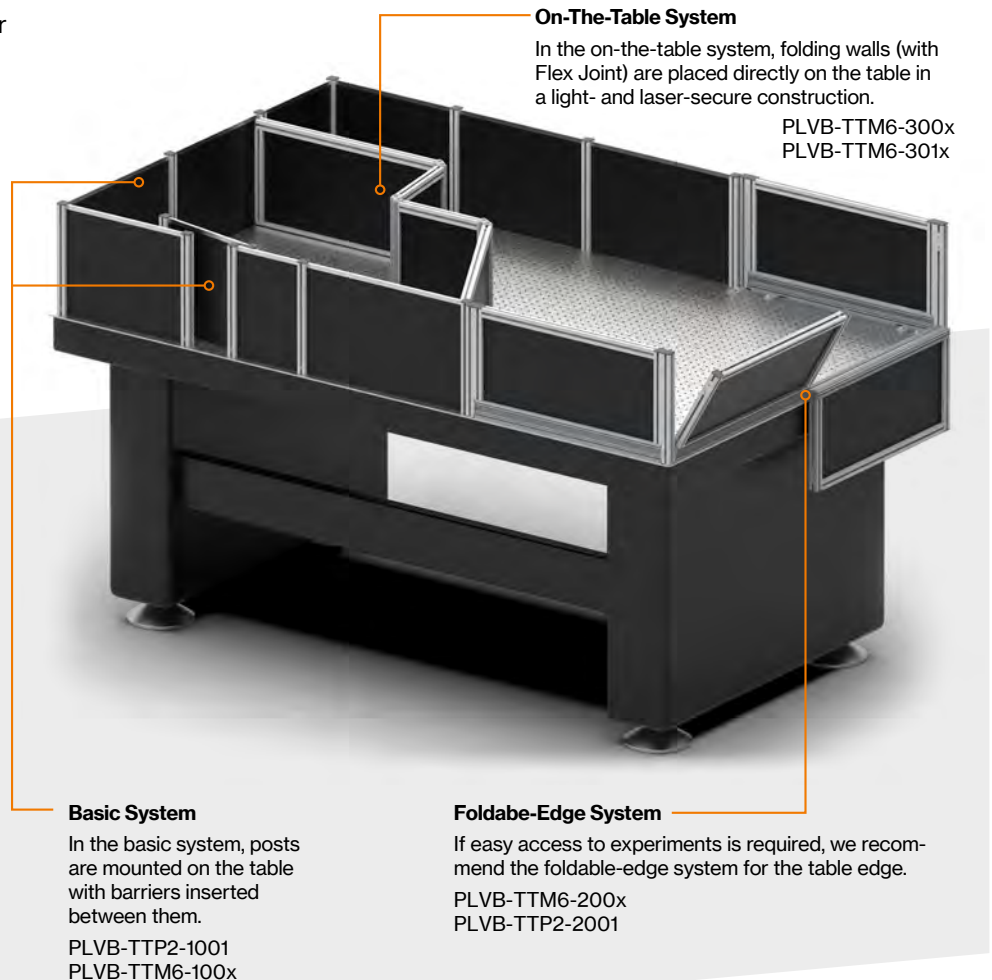
TTS – Table-Top System

Laser protection for optical tables

Available as a basic system, on-the-table system or foldable-edge system

Each of these variants offers a safe laser protection solution with a flexible design for all conventional OT sizes. The well known barrier M7P06 for the NIR range is available in various standard sizes. It has been tested and certified in accordance with DIN EN 60825-4. Other sizes and materials are available on request. The laser protection systems for optical tables (PLVB-TT) are based on the E25 folding wall system from laservision.

- Especially suitable for IR lasers
- Maximum flexibility of the structure on optical tables (OT)
- Systems can be combined partly with each other.
- Laser safety barrier (M7P06) available in various standard sizes
- Tested and certified in accordance with DIN EN 60825-4
- Customer-specific sizes available on request
- Also available with materials such as X1P02 and X1P03 on request



The Basic System

Specially developed for optical tables (OT) based on the E25 system

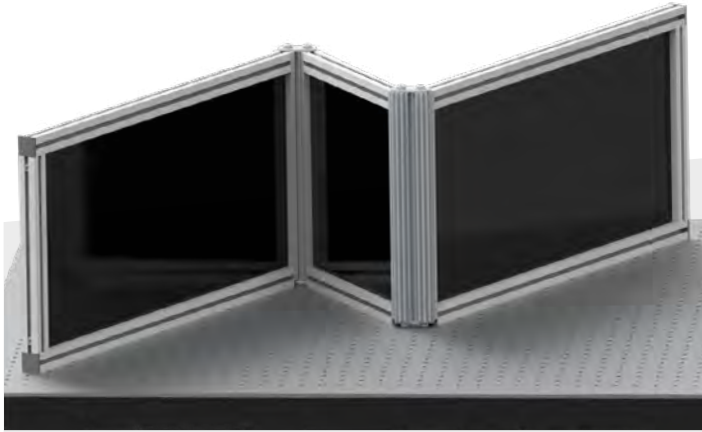
- Maximum flexibility of the structure
- Systems can also be combined
- Laser safety plates (M7P06) available in various standard sizes
- Tested and certified in accordance with DIN EN 60825-4
- Customer-specific sizes available on request
- Especially suitable for IR lasers
- Can be mounted with screw posts on tables with 25-mm grid and M6 holes (PLVB-TTP1-1001)
- Magnetic columns can be freely placed on magnetic tables (PLVB-TTP1-1002)
- M7P06 barrier in standard sizes with edge protection available from stock

Optional accessories

Basic system	Art. number
Barrier 306 × 208 mm (H × W) – (8x holes)	PLVB-TTM6-1001
Barrier 306 × 308mm (H × W) – (12x holes)	PLVB-TTM6-1002
Barrier 306 × 383mm (H × W) – (15x holes)	PLVB-TTM6-1003
Barrier 306 × 408mm (H × W) – (16x holes)	PLVB-TTM6-1004
Barrier 306 × 458mm (H × W) – (18x holes)	PLVB-TTM6-1005
Barrier 306 × 508mm (H × W) – (20x holes)	PLVB-TTM6-1006

On-The-Table System

A foldable system assembled on the table



The On-The-Table System with Flex Joint for laser-secure shielding of structures on the table

- Maximum flexibility of the structure
- Easy to set up on the OT in accordance with individual requirements
- Greater stability thanks to magnets (magnetic table surface required)
- Tested and certified in accordance with DIN EN 60825-4
- Partly combinable with the Basic System and Foldable-Edge System
- Space-saving storage when not in use

Start/end module	Art. number
Barrier 306 × 300mm (H × W)	PLVB-TTM6-3001
Barrier 306 × 600mm (H × W)	PLVB-TTM6-3002
Barrier 306 × 900mm (H × W)	PLVB-TTM6-3003

Extension module	Art. number
Barrier 306 × 300mm (H × W)	PLVB-TTM6-3011
Barrier 306 × 600mm (H × W)	PLVB-TTM6-3012
Barrier 306 × 900mm (H × W)	PLVB-TTM6-3013

Foldable-Edge System

Enables easy access to experiments

- Foldable for easy access to structures on the OT
- Modules available in 2 standard sizes
- Magnets used for locking to the system columns and between the modules
- Construction prevents the modules from falling on the table
- Tested and certified in accordance with DIN EN 60825-4
- Partly combinable with the Basic System and On-The-Table System

Foldable-edge system	Art. number
Barrier 306 × 600mm (H × W)	PLVB-TTM6-2001
Barrier 306 × 1200mm (H × W)	PLVB-TTM6-2002



The Foldable-Edge System with folding side module